

# HwF COVID Emergency Response

Status as of 30th April 2020.

In response to the COVID-19 crisis affecting global health and the global economy, HwF's education team has surveyed several migrant communities which are all representative of a different sector of industry, geographical location and ethnicity.

This series of short case studies, as well as a larger survey, enable HwF to sense what the upcoming challenges are, that these communities will be facing, as an extension of the lockdown of at least 1 month has been announced by the Thai national authorities.

## HwF Programmes Migrant Communities Surveys

### COMMUNITY INTERVIEWS - CASE STUDIES

**Est. 1800 families are considered highly vulnerable (income loss + at-risk family members)**

**Est. +6000 individuals**

Communities surveyed: 5

Community sizes: 30 to 500 community members

Community sizes: 10 to 80 families

Religion: Buddhist and Muslim

Ethnicities: Karen, Myanmar

Area : Mae Sot, Propra, Mae Ramad

Average income: 100-300 THB/day (\$3-6/day)



Actual income during COVID 10 crisis: zero

#### Activities mostly affected:

- Small grocery selling activities
- Cattle/Cow loading activities
- Closed shop/services related activities

Some communities are not affected yet as their sector of industry is still ongoing (some shops are still open).

#### Upcoming challenges:

1. Food shortages

2. Mental health disorders
3. Debts increase
4. Crime increase
5. Education: worried that their child's learning center will not be able to open again

A [rapid assessment of non-Thai nationals by IOM](#) found that 57% of respondents reported that the greatest challenge since the outbreak of Covid19 is insufficient income. 24% of their respondents reported that the greatest challenge faced by migrant children is limited access to education. 65% of respondents indicated that lack of literacy is the main reason why non-Thai nationals do not understand Covid19 information and 61% of respondents indicated that non-Thai nationals have misperceptions about Covid19.

A coordinated response is needed to ensure that both migrant children and their families have access to the resources, educational support, social-emotional support and information needed in order to make safe, informed decisions for their children.

### **Level of Awareness of the Symptoms and Risks**

There is a good level of awareness of the best practices to protect oneself from Covid-19.

Self-protection equipment level:

- Masks: 100%
- Hand gel: 60%
- Disinfectant: 0%

## **YOUTH COMMUNITIES LARGER SURVEYS**



*Rays of Youth surveyed the members of their youth network ranging from Group (1) to Group (4) in Rays of Youth's leadership and music programs.*

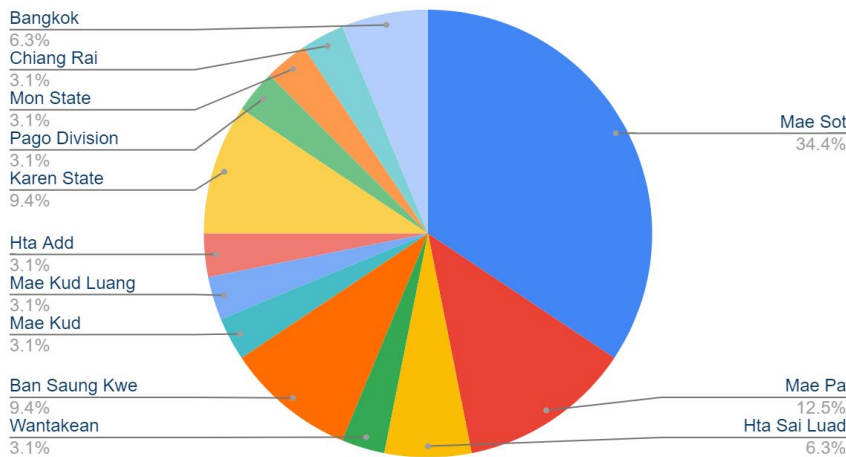
*The online survey form was sent to all members and 39 out of a total of more than 100 youths answered the survey. Most of them were difficult to reach online due to technical problems and due to the fact, that many of them are living in remote areas without strong internet access.*

## **Location**

---

The graph shows the current location mapping of youth members.

### Location of Rays of Youth's members

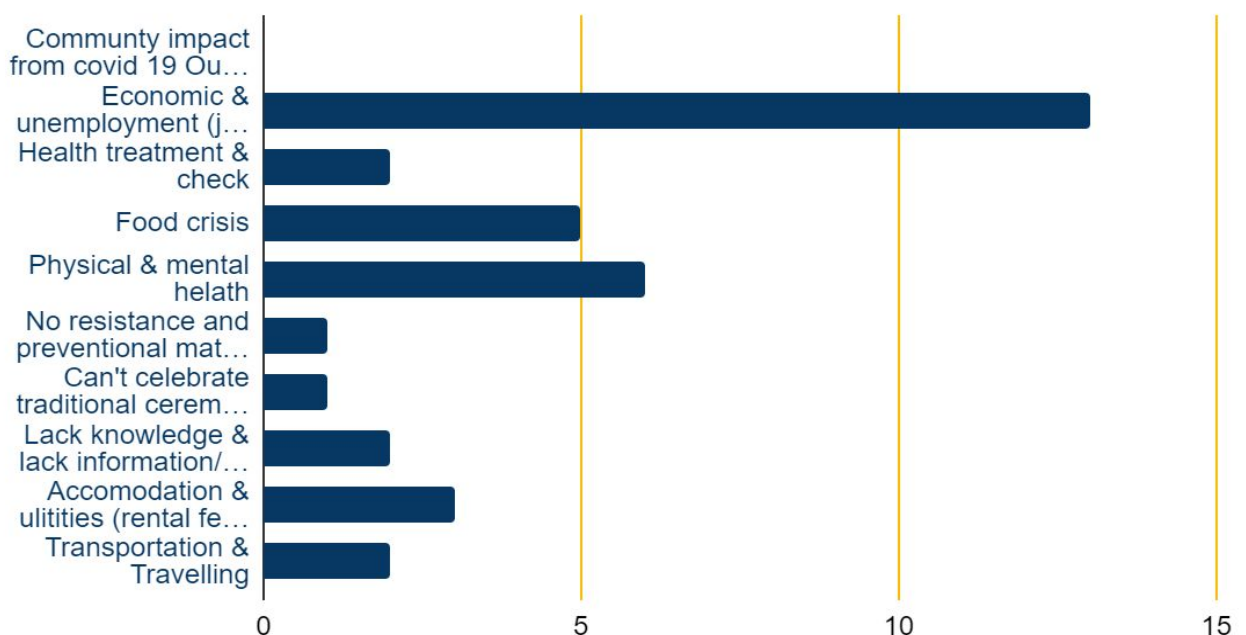


The survey results show that most of the youth members live in Mae Sot while the second largest number is in Mae Pa. The third largest group of members is in Ban Saung Kwe and Karen State.

## Community Impacts from Covid-19 Outbreak

The chart shows the impact on the communities where the youth members are living and what problems community members are facing.

### Community Impacts fro Covid-19 Outbreak

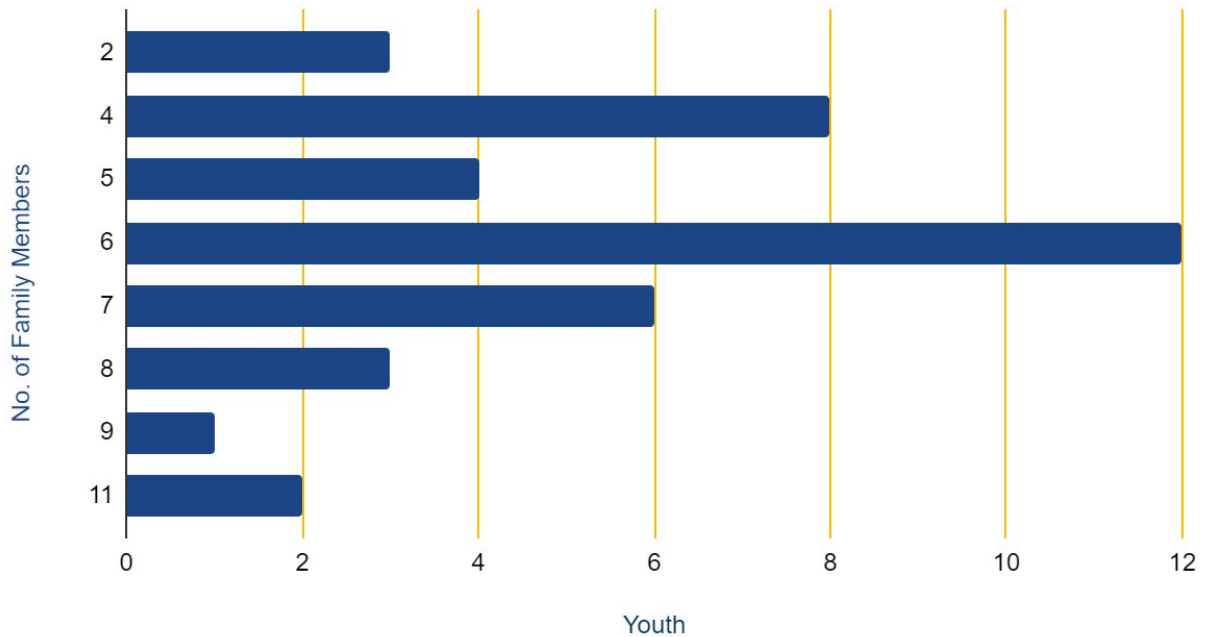


# Family Members

---

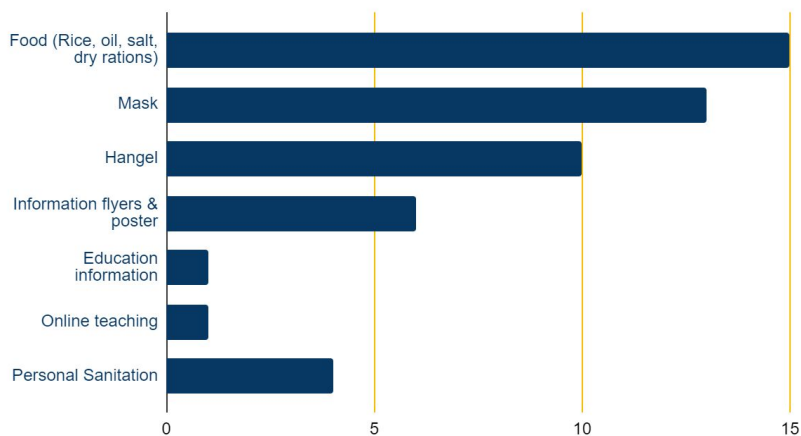
The graph shows the survey results indicating the number of family members per household.

## Youth vs. No. of Family Members



The survey results show that 6 family members in one household is the most frequent number while 4 family members per household is the second most frequent and 7 family members is the third most frequent number.

## Need Assessment\_Rays of Youth



# HwF Action Plan - Response

## 1 - Direct Assistance

- Food support to 1888 highly vulnerable families
- Personal hygiene protection equipment

## 2 - Information Support

- Posters/ vinyls in communities
- Online support and video content

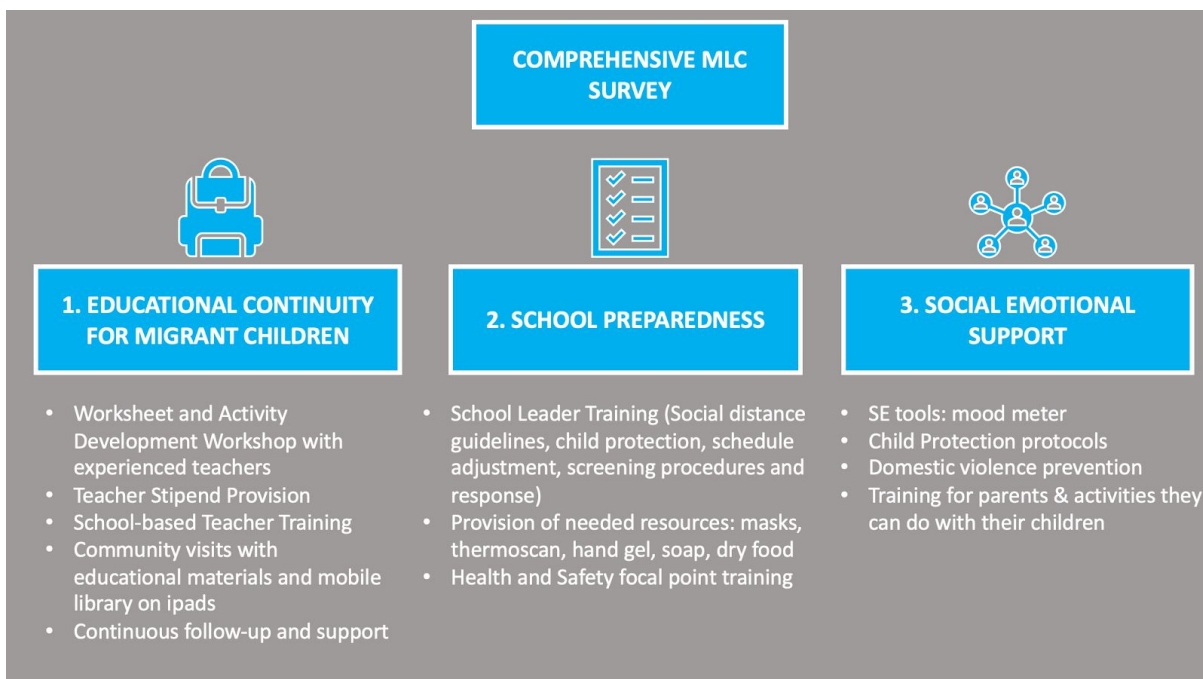
## 3 - Schooling Support for Migrant Students - Migrant Youths

- ECCD kit (Age 0-5)
- Exercise books and stationery for G 1 to 9 (Age groups 6-12 and 13-16)
- Internet support (where relevant)
- Radio programme (where relevant)

## 4 - Psychosocial Support -Counselling, Hotline Number

- Support hotline in Burmese language
- Child protection information and reporting system
- Training for parents on positive discipline

### Joint Action Plan for Education Continuity with Local CBOS and NGOs:



## Most Vulnerable - Beneficiaries Mapping

AREA	Individuals	Family
MaeSot	#	#
Bangla	800	120
Muhajireen	500	80
Kok kwai	250	30
Madeenah	500	80
Kok Wai	300	40
Ban Saungn Hwe	300	50
Hta Sai Loud	500	70
Hta Add	300	50
Wan Ta Kean	200	30
Mae Tao Ta Lay (TH)	70	70
Mae Kud Luang	300	50
Mae Pa Tai	20	20
Mae Ku Noi	20	20
<b>TOTAL Mae Sot</b>	<b>4,060</b>	<b>710</b>
<b>Prop Phra</b>		
Kee Ree Rat	na	250
Thoo Mwee Khee	500	70
Ban Pa Ka Kao	400	300
Ban Pha Ka Moai	200	100
Ban Sam Yod Doy	600	200
<b>TOTAL Prop Phra</b>	<b>6,670</b>	<b>920</b>
<b>Mae Ramad</b>		
Ban Bon Wan	600	105
Ban Ta Mai		80
Ban San Pha Rai	140	30
Ban Pa Rai Nuah	120	43
<b>TOTAL Mae Ramad</b>	<b>13,290</b>	<b>258</b>
<b>Est. number of families</b>		1,888
<b>Estimate number of individuals (based on av. 5 family members/household)</b>		9,440

